



Inventory of nationally and internationally important sites for migratory waterbirds in the AEWA area

Guidance notes

July 2020

Table of Contents

Table of Contents.....	1
List of Abbreviations	1
Introduction	2
Datasets provided	3
1. Excel file	3
2. Interactive map of sites	4
How to nominate sites of national or international importance?	6
Stepwise process for nomination of sites of importance for AEWA populations	7

List of Abbreviations

AEWA	Agreement on the Conservation of African-Eurasian Migratory Waterbirds
CS	Critical Site
CSN	Critical Site Network
EU	European Union
IBA	Important Bird and Key Biodiversity Area
IWC	International Waterbird Census
SPA	Special Protection Area under the EU Birds Directive

Notes: In addition to these guidance notes, a [video tutorial](#) is provided at this [link](#).

Some of the figures in these guidance notes are screen shots of Excel tables. For better viewing of these figures, please zoom in the document on your screen.

Introduction

According to Target 3.1 of the AEWA Strategic Plan, all Contracting Parties to the Agreement on the Conservation of African-Eurasian Migratory Waterbirds (AEWA) are required to review and confirm **the known sites of national or international importance for populations listed in Table 1 of Annex 3 of AEWA (i.e. the AEWA Action Plan)** by MOP8.

To accomplish this target, **Contracting Parties are requested to nominate nationally or internationally important sites in their territory in the AEWA area for the populations listed in Table 1 of Annex 3 of the Agreement¹ and submit the Nomination Sheet to the AEWA Secretariat (sergey.dereliev@unep-awea.org) by 31 December 2020.**

More detailed background information and the agreed criteria for sites of national or international importance are provided in the AEWA Technical Committee Meeting Document UNEP/AEWA/TC15.17². In summary, the Technical Committees recognises as:

1. **Sites of international importance:** *any site qualifying for one or more populations listed on Table 1 of the AEWA Action Plan under the site selection criteria of:*
 - a. *an international convention or another legal instrument operating in the Agreement area³; or*
 - b. *the global or the relevant regional criteria for:*
 - i. *Critical Sites defined under the UNEP/GEF African-Eurasian Flyway Project (Wings over Wetlands)⁴;*
 - ii. *Important Bird and Biodiversity Areas defined by BirdLife International⁵; or*
 - iii. *Critical Habitats⁶ defined under the International Finance Corporation's Performance Standard 6 (PS6) on Biodiversity Conservation and Sustainable Management of Living Resources.*
2. **Sites of national importance:** *any sites that do not meet any criteria of international importance but identified as being important for one or more populations listed on Table 1 of AEWA's Annex 3 either through protected area designation or in any*

¹ In short: AEWA populations (https://www.unep-awea.org/sites/default/files/basic_page_documents/agreement_text_english_final.pdf). A definitive list of relevant AEWA populations are available in the national reporting format for each country. A provisional list with the relevant 1% thresholds is also available on the Critical Site Network Tool 2.0 (<http://csn-tool.herokuapp.com/en/countries>): Countries > Search by Country name or select from the map > Select the Populations tab below the map.

² <https://www.unep-awea.org/en/document/preliminary-proposal-inventory-framework-internationally-and-nationally-important-sites>

³ The most relevant global legal instruments for AEWA's purposes is the Ramsar Convention on Wetlands with Criteria 2, 4, 5, 6 being the most relevant for waterbirds, in Europe the Bern Convention's Emerald Network, and in the European Union the Special Protection Areas designated under Articles 4.1 and 4.2 of the Birds Directive.

⁴ See the CSN criteria under the data heading at <https://criticalsites.wetlands.org/en/about>

⁵ See the global and, where applicable, the regional IBA criteria at <http://datazone.birdlife.org/site/ibacriteria>

⁶ Criteria for Critical Habitats can be found at <https://www.thebiodiversityconsultancy.com/es/wp-content/uploads/2013/07/Critical-Habitat24.pdf>

national site inventory process recognised by the respective national AEWA administrative authority as relevant for this purpose.

Nominating sites of national or international importance is the responsibility of the Contracting Parties, but there are already a number of international inventories of international importance available that can be used by Contracting Parties completing this task. To assist Contracting Parties in compiling their list of sites of national or international importance for AEWA populations, the AEWA Secretariat has created a **Nomination Sheet** and compiled **tabular and spatial datasets** with the help of BirdLife International and Wetlands International with data from some of the existing inventories of sites of international importance mentioned above.

After receiving the nomination of sites of national and international importance from the Contracting Parties, the AEWA Secretariat will check the Nomination Sheets to ensure the comprehensiveness of the nominations and it will compile the list of known sites of national or international importance for AEWA populations to be submitted to MOP8.

These guidance notes first introduce the tabular and spatial datasets provided by the AEWA Secretariat and then describe how Contracting Parties can nominate sites.

Datasets provided

Along with these guidance notes, each Contracting Party is provided with:

- 1) a tabular dataset (Excel file) containing data from relevant existing inventories of sites of international importance; and
- 2) a spatial dataset (interactive map of sites).

1. Excel file

Each Contracting Party is provided with an Excel file that contains 4 worksheets: one empty Nomination Sheet and 3 worksheets with data for AEWA populations from the following site inventories:

- a. **Wetlands of International Importance (Ramsar Sites)**⁷: Each Ramsar Site is listed, but not all of them support nationally or internationally important numbers of AEWA-listed species or populations.
- b. **Critical Sites (CSs) of the Critical Site Network**: Sites that qualify under the Ramsar Criterion 2 (CSN 1 criterion) and Ramsar Criterion 6 (CSN 1 criterion) for waterbirds in the Agreement Area. Only sites that qualify for one or more AEWA populations are listed in the worksheet.
- c. **Important Bird and Key Biodiversity Areas (IBAs)**: Sites meeting the IBA criteria for one or more criteria for AEWA-listed species (i.e. species in Annex 2).

Furthermore, for the EU Member States one additional worksheet is provided on:

⁷ Species level data is not available for each Ramsar Sites in tabular format. However, many of the Ramsar Sites are also identified as CS, IBAs or, in the European Union, as SPAs and species records can be found in those datasets. If this is not the case, Contracting Parties are encouraged to add the relevant records to the nomination sheet based on the data from the Ramsar Sites Information Service.

- d. **Special Protection Areas (SPAs)**: sites designated under Articles 4.1 and 4.2 of the EU Birds Directive. Only sites with qualifying species listed in Annex 2 of AEWA are included.

Notes:

- With the exception of the worksheet on Ramsar sites, all worksheets present the data using the same structure and the same field names to make it easier to copy data from the inventories to the nomination sheet. As a consequence of this, field names might differ from the field names in the original datasets. Table 1 at the end of this document maps the field names of the source databases against the ones used in this Excel file.
- In some of the worksheets, where certain data is not available for given fields in the original dataset, the relevant fields are left empty in the worksheet.
- For information on Emerald Network Sites (relevant for European countries that are not EU Member States), please access the Emerald Network Viewer⁸.

2. Interactive map of sites

An interactive map of sites is provided as an HTML file. Please download the HTML file and save it on your local hard drive. Once it is saved, it can be used also off-line. The interactive map serves the following purposes:

1. Assist assessing the overlap amongst sites in two or more different inventories;
2. Provide additional background information either on other designated areas that might be relevant for this inventory or provide an overview of sites for which waterbird data (mainly from January and July International Waterbird Census counts) is available.

The map contains the following **layers** which can all be activated and deactivated individually:







1. Ramsar Site boundaries;
2. Ramsar Site coordinates (only for sites that have no boundaries available);
3. SPA boundaries;
4. Critical Site boundaries;
5. Critical Site coordinates (only for sites that have no boundaries available);
6. IBA boundaries;
7. IBA coordinates (only for sites that have no boundaries available);
8. IWC⁹ boundaries;
9. IWC lines (when the site is represented by a line such as transects, sections of rivers or coasts and no boundaries are available);
10. IWC coordinates (only for sites that are not defined by boundaries or lines);
11. Boundaries of nationally, regionally, internationally or other designated areas based on the Protected Planet data without Natura 2000 and Ramsar sites;
12. Coordinates of nationally, regionally, internationally or other designated areas based on the Protected Planet data without Natura 2000 and Ramsar sites (only for sites that have no boundaries available).

⁸ <http://emerald.eea.europa.eu/>

⁹ Sites covered by the International Waterbird Census

Layers 1-7 refer to sites that have already been identified as being of international importance in the AEWA context, and corresponding species information is available in the tabular datasets provided in the Excel file. At least in part, **these sites often overlap** between one another. The interactive map will assist Contracting Parties identifying which sites (Ramsar Sites, SPAs, CSs, IBAs) overlap and to consolidate the related data.

The maps use the following colour codes for the various layers:

Ramsar sites:	green	
SPAs:	blue	
Critical Sites:	orange	
IBAs:	purple	
IWC:	red	
Designated areas:	shades of grey	


The various layers of the map can be activated or deactivated by clicking on the icon in the upper right corner of the map ().



Figure 1: The site code and name of a given site will appear if you click on it or its boundaries and any part of this text can be copied

Note on IBA data (layers 6 & 7): Please consider contacting the national partner organisation of BirdLife International¹⁰ for updated data.

Notes on IWC data (layers 8–10): Please consider using this data to:

¹⁰ <https://www.birdlife.org/worldwide/partnership/birdlife-partners>

1. Identify IWC sites that overlap with other key sites to request updated data from the national IWC coordinators¹¹;
2. Nominate additional sites of national or international importance.

Note on data from the Protected Planet interface (layers 11 & 12): Boundaries and coordinates of nationally or internationally designated areas from the Protected Planet are made available in particular to assist Contracting Parties in identifying mainly sites of national importance, but these layers show all designated areas regardless to their importance for AEWA species and populations. Boundaries of Ramsar Sites and Natura 2000 areas were removed from these layers to avoid duplication.

How to nominate sites of national or international importance?

It is the Contracting Parties' responsibility to nominate sites of national or international importance using the Nomination Sheet provided in the Excel file for the country.

When a site qualifies for nomination because it supports a given waterbird population in numbers that would satisfy one or more criteria of national or international importance recognised by the AEWA Technical Committee (see introduction), a record should be entered for each qualifying population at the given site. It is also possible to nominate sites that qualify as internationally important based on the total number of waterbirds they host, such as the case of the Ramsar Criterion 5 (i.e. supporting 20,000 waterbirds). If a species occurs at the site in more than one season (e.g. both during breeding and passage), a separate record should be entered for each relevant season.

To assist the nomination process, the most relevant available inventories are provided as separate worksheets in the Excel file. Having them converted to the same structure makes it easier to use the existing inventories in the site nomination process. However, we are aware that;

- Some of these sites overlap. In such cases, only one of the overlapping sites should be nominated;
- More up-to-date data might be available for certain sites than provided in the current Excel file. In such cases, we would encourage Contracting Parties to update the available information in the Nomination Sheet (see Step 8 in the stepwise process below);
- Some additional sites may meet internationally recognised criteria of international importance or can be considered as being nationally important for one or more populations listed in Table 1 of AEWA but are not listed in any of the worksheets of the attached Excel file (i.e. are neither IBAs, Ramsar Sites nor CSs). In such cases, we would encourage Contracting Parties to add these sites also to the Nomination Sheet;
- Some sites currently listed in one or more of the worksheets in the attached Excel file might have lost their importance for the AEWA species and populations over time, since these inventories were produced. In such cases we would like to ask you to notify the AEWA Secretariat about this in the relevant worksheet by providing detailed information. However, if changes are reversible, it is recommended to still nominate such sites.

¹¹ <https://www.wetlands.org/our-network/iwc-coordinators/>

You might find it easiest to follow the steps outlined below. They should, in particular, be helpful when considering the existing overlaps between sites that have already been identified in other inventories.

Stepwise process for nomination of sites of importance for AEWA populations

1. Start by systematically working through the maps for the sites of international importance (Ramsar Sites, IBAs, CSs and also SPAs in the case of EU Member States). These layers are switched on by default together with the Graticule layer, which provides a grid to aid systematic review of the existing network of sites in your country.

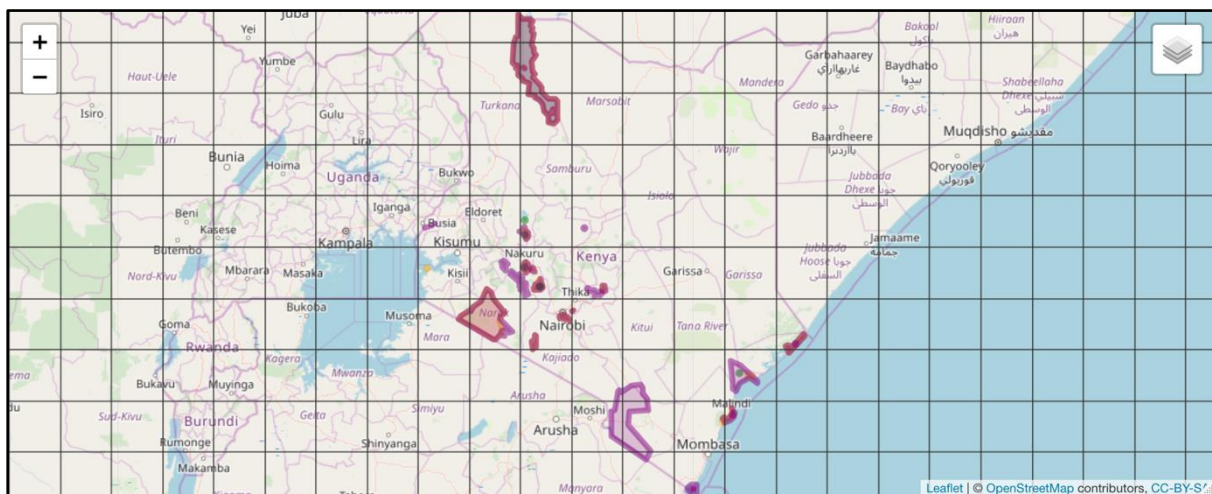


Figure 2: You can keep the ‘Graticule’ layer switched on and start checking each grid cell from the northwest corner of the country to the southeast corner and check whether there are any internationally important sites in that grid cell. If yes, move to the next point.

2. For each site, its colour indicates its type as mentioned on page 4. Mixed colours indicate that the site has data in more than one dataset. You can check which ones are the relevant datasets by switching on and off the relevant layers in the interactive map using the relevant tick boxes in the layer menu (☰ see this icon in the top right corner of the map).
3. Once you have established the type(s) of the site, look up the data in the relevant Excel worksheet(s). E.g. for CSs use the CSN worksheet, for IBAs use the IBA worksheet, for SPAs the SPA worksheet. For Ramsar Sites, use the link in the worksheet to look up the species information in the Ramsar Information Sheet on the RSIS website¹². However, many Ramsar Sites are already identified also as IBAs, CSs or SPAs, so it might be sufficient to use the data from those worksheets. For Emerald Network sites you can find information on the Emerald Network viewer¹³. However, for both of these types of designations your colleagues dealing with these designations at your agency should have access to the relevant data and can provide them to you. You can use the relevant site ID or site name

¹² <https://rsis.ramsar.org/>

¹³ <http://emerald.eea.europa.eu/>

to filter the records for the site in the relevant worksheets. The site IDs can be copied from the pop-up boxes on the interactive map after clicking on the site boundaries or site coordinates (see figure on page 4 how to look up site IDs and names). If the site is only in one inventory, you can move to Step 5.

4. If the same site is listed in more than one of the inventories (e.g. both in the IBA and CSN), then compare the records carefully. Many records might be the same, but there might be differences. These differences are usually caused by one of the following reasons:
 - a. The sites have a different extent. In such cases, usually the best is to use the record from the larger site to nominate the site and population combination.
 - b. The inventories were produced at different times. If the same species is mentioned in both inventories for the same season, use the more recent record.
 - c. A species or population is not mentioned in one of the identified inventories. This is often the result of slight differences amongst different sets of criteria (e.g. the IBA inventories often consider biogeographic regions such as all of Africa, while the CSN or Ramsar criteria consider flyway populations). In such cases, it is the best to include information for each population for the site that is mentioned in any of the inventories for the overlapping sites (see the example below).

Source	Country	ID	Site	Scientific_name	English_name	Population	Minimum	Maximum	Units	Season	Year_start	Year_end	IBA_criteria
37	IBA	Kenya	6418 Lake Turkana	Calidris minuta	Little Stint		113000	113000	individuals	winter	1992	1992	A4i
38	IBA	Kenya	6418 Lake Turkana	Charadrius asiaticus	Caspian Plover		500	500	individuals	winter	1992	1992	A4i
39	IBA	Kenya	6418 Lake Turkana	Charadrius hiaticula	Common Ringed Plover		13600	13600	individuals	winter	1992	1992	A4i
40	IBA	Kenya	6418 Lake Turkana	Charadrius pecuarius	Kittlitz's Plover		8600	8600	individuals	non-breeding	1992	1992	A4i
41	IBA	Kenya	6418 Lake Turkana	Pelecanus rufescens	Pink-backed Pelican		1060	1060	individuals	non-breeding	1992	1992	A4i
42	IBA	Kenya	6418 Lake Turkana	Phoenicopterus roseus	Greater Flamingo		2580	2580	individuals	non-breeding	1992	1992	A4i
43	IBA	Kenya	6418 Lake Turkana	Species group - waterbirds	A4iii		0	0	individuals	non-breeding	1992	1992	A4iii
44	IBA	Kenya	6418 Lake Turkana	Vanellus spinosus	Spur-winged Lapwing		6930	6930	individuals	non-breeding	1992	1992	A4i

Source	Country	ID	Site	Scientific_name	English_name	Population	Minimum	Maximum	Units	Season	Year_start	Year_end	IBA_criteria
32	CSN	ke	6418 Lake Turkana	Calidris minuta	Little Stint	Western Siberia/SW Asia, E & S Africa	113000	113000	individuals	winter	1992	1992	A4i
33	CSN	ke	6418 Lake Turkana	Charadrius asiaticus	Caspian Plover	SE Europe & West Asia/E & Central Southern Africa	500	500	individuals	winter	1992	1992	A4i
34	CSN	ke	6418 Lake Turkana	Charadrius hiaticula	Common Ringed Plover	tundrae, NE Europe & Siberia/SW Asia, E & S Africa	13600	13600	individuals	winter	1992	1992	A4i
35	CSN	ke	6418 Lake Turkana	Charadrius pecuarius	Kittlitz's Plover	Southern & Eastern Africa	8600	8600	individuals	winter	1992	1992	A4i
36	CSN	ke	6418 Lake Turkana	Pelecanus rufescens	Pink-backed Pelican	Tropical Africa & SW Arabia	1060	1060	individuals	winter	1992	1992	A4i
37	CSN	ke	6418 Lake Turkana	Phoenicopterus roseus	Greater Flamingo	Eastern Africa	2580	2580	individuals	winter	1992	1992	A4i

Figure 3: Example for overlapping sites with slightly different lists of qualifying species at Lake Turkana, Kenya. Most of the records are identical in the IBA and CSN inventories but the IBA inventory also includes records for the Spur-winged Lapwing for the occurrence of 20,000 waterbirds. Although Spur-winged Lapwing is listed in Annex 2 of AEWA, the population that occurs in Kenya is not listed in Table 1 of Annex 3 of AEWA. Therefore, this record is not qualifying the site. However, the 20,000 waterbirds (Ramsar 5 and IBA A4iii) are accepted criteria of international importance. Hence this record can be included into the nomination of the site.

5. Once you have identified the records to be used in the site nomination, mark these records with YES in column Q in the worksheet.
6. Mark the records selected not to be included in the site nomination with NO in column Q you will not use to nominate and provide the reason in Column R why you do not want to use that record. Examples of the most frequent possible reasons can be:

- It is a duplicate record of another one already used from another worksheet (e.g. you have already nominated the identical records from the CSN worksheet for an IBA);
- The site has lost the importance for the particular population;
- It is an erroneous record.

A	B	C	D	E	F	G	H	I	J	K	L	M	N	O	P	Q	R	S
Source	Country	ID	Site	Scientific_name	English_name	Population	Minimum	Maximum	Units	Season	Year_start	Year_end	IBA_criteria	CSN1_criteria	CSN2_criteria	Nominal	Reason	Other_criteria
37	IBA	Kenya	6418 Lake Turkana	Calidris minuta	Little Stint	Western Siberia/SW Asia, E & S Africa	113000	113000	Individuals	winter	1992	1992	A4i	0	1	YES		
38	IBA	Kenya	6418 Lake Turkana	Charadrius asiaticus	Caspian Plover	SE Europe & West Asia/E & Central Southern Afric	500	500	Individuals	winter	1992	1992	A4i	0	1	YES		
39	IBA	Kenya	6418 Lake Turkana	Charadrius hiaticula	Common Ringed Plover	tundrae, NE Europe & Siberia/SW Asia, E & S Afric	13600	13600	Individuals	winter	1992	1992	A4i	0	1	YES		
40	IBA	Kenya	6418 Lake Turkana	Charadrius pecuarius	Kittlitz's Plover	Southern & Eastern Africa	8600	8600	Individuals	winter	1992	1992	A4i	0	1	YES		
41	IBA	Kenya	6418 Lake Turkana	Pelecanus rufescens	Pink-backed Pelican	Tropical Africa & SW Arabia	1060	1060	Individuals	winter	1992	1992	A4i	0	1	YES		
42	IBA	Kenya	6418 Lake Turkana	Phoenicopterus roseus	Greater Flamingo	Eastern Africa	2580	2580	Individuals	winter	1992	1992	A4i	0	1	YES		
43	IBA	Kenya	6418 Lake Turkana	Species group - waterbirds	A4iii		0	0	Individuals non-breedi		1992	1992	A4iii			YES		
44	IBA	Kenya	6418 Lake Turkana	Vanelus spinosus	Spur-winged Lapwing		6930	6930	Individuals non-breedi		1992	1992	A4i			NO		Not an AEWA population

A	B	C	D	E	F	G	H	I	J	K	L	M	N	O	P	Q	R	S
Source	Country	ID	Site	Scientific_name	English_name	Population	Minimum	Maximum	Units	Season	Year_start	Year_end	IBA_criteria	CSN1_criteria	CSN2_criteria	Nominal	Reason	Other_criteria
37	CSN	ke	6418 Lake Turkana	Calidris minuta	Little Stint	Western Siberia/SW Asia, E & S Africa	113000	113000	Individuals	winter	1992	1992	A4i	0	1	YES		
38	CSN	ke	6418 Lake Turkana	Charadrius asiaticus	Caspian Plover	SE Europe & West Asia/E & Central Southern Afric	500	500	Individuals	winter	1992	1992	A4i	0	1	YES		
39	CSN	ke	6418 Lake Turkana	Charadrius hiaticula	Common Ringed Plover	tundrae, NE Europe & Siberia/SW Asia, E & S Afric	13600	13600	Individuals	winter	1992	1992	A4i	0	1	YES		
40	CSN	ke	6418 Lake Turkana	Charadrius pecuarius	Kittlitz's Plover	Southern & Eastern Africa	8600	8600	Individuals	winter	1992	1992	A4i	0	1	YES		
41	CSN	ke	6418 Lake Turkana	Pelecanus rufescens	Pink-backed Pelican	Tropical Africa & SW Arabia	1060	1060	Individuals	winter	1992	1992	A4i	0	1	YES		
42	CSN	ke	6418 Lake Turkana	Phoenicopterus roseus	Greater Flamingo	Eastern Africa	2580	2580	Individuals	winter	1992	1992	A4i	0	1	YES		

Figure 4. Example for marking the records to be used in the IBA and CSN worksheets to nominate internationally important populations at Lake Turkana. If the IBA and CSN records are the same, it is recommended to use the CSN records because these are already allocated to the relevant AEWA populations.

- Once you have filled in Columns Q and R for each record in all the relevant worksheets for set of overlapping sites, filter on records with YES in Column Q in each relevant sheet, select the records from Columns A to P, copy and paste these records to the Nomination Sheet.

A	B	C	D	E	F	G	H	I	J	K	L	M	N	O	P	Q
Source	Country	ID	Site	Scientific_name	English_name	Population	Minimum	Maximum	Units	Season	Year_start	Year_end	IBA_criteria	CSN1_criteria	CSN2_criteria	Nominal
37	CSN	ke	6418 Lake Turkana	Calidris minuta	Little Stint	Western Siberia/SW Asia, E & S Africa	113000	113000	Individuals	winter	1992	1992	A4i	0	1	YES
38	CSN	ke	6418 Lake Turkana	Charadrius asiaticus	Caspian Plover	SE Europe & West Asia/E & Central Southern Afric	500	500	Individuals	winter	1992	1992	A4i	0	1	YES
39	CSN	ke	6418 Lake Turkana	Charadrius hiaticula	Common Ringed Plover	tundrae, NE Europe & Siberia/SW Asia, E & S Afric	13600	13600	Individuals	winter	1992	1992	A4i	0	1	YES
40	CSN	ke	6418 Lake Turkana	Charadrius pecuarius	Kittlitz's Plover	Southern & Eastern Africa	8600	8600	Individuals	winter	1992	1992	A4i	0	1	YES
41	CSN	ke	6418 Lake Turkana	Pelecanus rufescens	Pink-backed Pelican	Tropical Africa & SW Arabia	1060	1060	Individuals	winter	1992	1992	A4i	0	1	YES
42	CSN	ke	6418 Lake Turkana	Phoenicopterus roseus	Greater Flamingo	Eastern Africa	2580	2580	Individuals	winter	1992	1992	A4i	0	1	YES
70	IBA	Kenya	6418 Lake Turkana	Species group - waterbirds	A4iii		0	0	Individuals non-breedi		1992	1992	A4iii			YES

Figure 5: Example for selecting and copying the records from the IBA worksheet and having the records consolidated in the Nomination Sheet for Lake Turkana.

A	B	C	D	E	F	G	H	I	J	K	L	M	N	O	P	Q
Source	Country	ID	Site	Scientific_name	English_name	Population	Minimum	Maximum	Units	Season	Year_start	Year_end	IBA_criteria	CSN1_criteria	CSN2_criteria	Nominal
2	CSN	ke	6418 Lake Turkana	Calidris minuta	Little Stint	Western Siberia/SW Asia, E & S Africa	113000	113000	Individuals	winter	1992	1992	A4i	0	1	YES
3	CSN	ke	6418 Lake Turkana	Charadrius asiaticus	Caspian Plover	SE Europe & West Asia/E & Central Southern Afric	500	500	Individuals	winter	1992	1992	A4i	0	1	YES
4	CSN	ke	6418 Lake Turkana	Charadrius hiaticula	Common Ringed Plover	tundrae, NE Europe & Siberia/SW Asia, E & S Afric	13600	13600	Individuals	winter	1992	1992	A4i	0	1	YES
5	CSN	ke	6418 Lake Turkana	Charadrius pecuarius	Kittlitz's Plover	Southern & Eastern Africa	8600	8600	Individuals	winter	1992	1992	A4i	0	1	YES
6	CSN	ke	6418 Lake Turkana	Pelecanus rufescens	Pink-backed Pelican	Tropical Africa & SW Arabia	1060	1060	Individuals	winter	1992	1992	A4i	0	1	YES
7	CSN	ke	6418 Lake Turkana	Phoenicopterus roseus	Greater Flamingo	Eastern Africa	2580	2580	Individuals	winter	1992	1992	A4i	0	1	YES
8	IBA	Kenya	6418 Lake Turkana	Species group - waterbirds	A4iii		0	0	Individuals non-breedi		1992	1992	A4iii			YES

Figure 6. Example of Nomination Sheet records for Lake Turkana resulting from consolidating records from the IBA and CSN worksheets.

- As you can see, these data are rather old. If you have more up-to-date data for any of the qualifying populations, please overwrite the relevant figures in Columns H-I and L-P in the Nomination Sheet and indicate “Update” in Column A of the same sheet.

	A	B	C	D	E	F	G	H	I	J	K	L	M	N	O	P	Q
1	Source	Country	ID	Site	Scientific_f	English_nai	Population	Minimum	Maximum	Units	Season	Year_start	Year_end	IBA_criteri	CSN1_crite	CSN2_crite	Nationally
2	CSN	ke	6418	Lake Turkar	Calidris mii	Little Stint	Western Sil	113000	113000	individuals	winter	1992	1992	A4i	0	1	
3	CSN	ke	6418	Lake Turkar	Charadrius	Caspian Plc	SE Europe &	500	500	individuals	winter	1992	1992	A4i	0	1	
4	CSN	ke	6418	Lake Turkar	Charadrius	Common R	tundrae, NI	13600	13600	individuals	winter	1992	1992	A4i	0	1	
5	CSN	ke	6418	Lake Turkar	Charadrius	Kittlitz's Pl	Southern &	8600	8600	individuals	winter	1992	1992	A4i	0	1	
6	CSN	ke	6418	Lake Turkar	Pelecanus r	Pink-backe	Tropical Afri	1060	1060	individuals	winter	1992	1992	A4i	0	1	
7	CSN	ke	6418	Lake Turkar	Phoenicop	Greater Fla	Eastern Afri	2580	2580	individuals	winter	1992	1992	A4i	0	1	
8	Update	Kenya	6418	Lake Turkar	Species gro	A4iii		220000	245000	individuals non-breedi		1992	1992	A4iii			
9																	
10																	
11																	
12																	

Figure 7. Example for an updated record marked with yellow in the Nomination Sheet.

- If there are any other AEWA populations for which a given site is nationally or internationally important, add a new line for each population and indicate “New” in Column A of the Nomination Sheet. Add the relevant data in Columns B-M. Then add the relevant international criteria in columns N-P. You can also indicate the relevant Ramsar or SPA criteria into Column N. If, however, the site is of only national importance for the given AEWA species or population, write “Yes” in Column Q.

	A	B	C	D	E	F	G	H	I	J	K	L	M	N	O	P	Q
1	Source	Country	ID	Site	Scientific_f	English_nai	Population	Minimum	Maximum	Units	Season	Year_start	Year_end	IBA_criteri	CSN1_crite	CSN2_crite	Nationally
2	CSN	ke	6418	Lake Turkar	Calidris mii	Little Stint	Western Sil	113000	113000	individuals	winter	1992	1992	A4i	0	1	
3	CSN	ke	6418	Lake Turkar	Charadrius	Caspian Plc	SE Europe &	500	500	individuals	winter	1992	1992	A4i	0	1	
4	CSN	ke	6418	Lake Turkar	Charadrius	Common R	tundrae, NI	13600	13600	individuals	winter	1992	1992	A4i	0	1	
5	CSN	ke	6418	Lake Turkar	Charadrius	Kittlitz's Pl	Southern &	8600	8600	individuals	winter	1992	1992	A4i	0	1	
6	CSN	ke	6418	Lake Turkar	Pelecanus r	Pink-backe	Tropical Afri	1060	1060	individuals	winter	1992	1992	A4i	0	1	
7	CSN	ke	6418	Lake Turkar	Phoenicop	Greater Fla	Eastern Afri	2580	2580	individuals	winter	1992	1992	A4i	0	1	
8	Update	Kenya	6418	Lake Turkar	Species gro	A4iii		220000	245000	individuals non-breedi		1992	1992	A4iii			
9	NEW	ke	6418	Lake Turkar	Rhyncops f	African Skir	Eastern & S	50	50	pairs	breeding	1992	1992	Ramsar 6			1
10	NEW	ke	6418	Lake Turkar	Alopochen	Egyptian Gr	Eastern & S	600	700	individuals non-breedi		2005	2006				YES
11																	
12																	

Figure 8. Example for adding new records (marked with pink) in the Nomination Sheet for Lake Turkana.

- Repeat Steps 3-9 for each unique site identified in your country in the Ramsar Site, IBA, CSN or SPA worksheets. “Unique sites” means sites that are mentioned in at least one of the above-mentioned site inventories.
- Consider whether there are any other nationally or internationally important sites for any of the AEWA populations in your country. Usually, there are many sites (mainly in the breeding season when waterbirds are more dispersed) that might be nationally important but do not meet internationally recognised criteria of international importance. Very often these sites are already protected at national level or receive special management (e.g. under agri-environmental measures in the European Union).

There might also be many sites that could meet the criteria of international importance but have not yet been identified in relation to their importance for species that became globally threatened after the compilation of the IBA and CSN inventories. Examples of species that have recently been categorized as globally threatened include the Grey-crowned Crane, Common Pochard, etc. (see detailed list in the Table 2 of this document). For these sites, please add records to the Nomination Sheet for each additional AEWA population for which the site is nationally or internationally important, following the instructions described under Step 9 above.

12. For many of the internationally important sites and nationally protected areas there are site boundaries available in the relevant inventories or in the Protected Planet layers. If this is the case, no additional work is necessary. The site boundary related to the site ID mentioned in Column C will be used.
13. If a site has no site boundaries (i.e. only coordinates are given on the interactive map) but you are able to provide site delineations, please provide the map file with the site boundaries and indicate the file name in Column R. Ideally, you should be using the same site ID as in Column C as file name or as the identifier of the polygon if you provide one file for all sites in your country. Both shapefiles and Keyhole Markup Language (KML¹⁴) files are acceptable.
14. If no site boundaries can be provided, but site coordinates are available already in the provided datasets, just use the site's ID in Column C.
15. If you nominate a new site but only can provide its central coordinates, enter those in Columns S and T.
16. Repeat Steps 12 – 15 for each identified nationally or internationally important site.
17. Once you have completed the Nomination Sheet for each site and the corresponding AEWA populations or total numbers of waterbirds for which the site is recognized as being of international or national importance, please submit the Excel file (including your notes in the worksheets provided) and site boundaries to the AEWA Secretariat (sergey.dereliev@unep-awa.org).

Should you have any questions, please contact: Sergey Dereliev (sergey.dereliev@unep-awa.org)

¹⁴ This is the file format in which you can save site boundaries e.g. from Google Earth Pro or Google Map. A video tutorial on delineating site boundaries in Google Earth Pro is available at this [link](#).

Table 1. Data fields in the Excel worksheet and the original databases

Excel worksheet	Ramsar Sites	IBAs	CSN	SPA
Source	n.a.	n.a.	n.a.	n.a.
Country	Country	Country		COUNTRY_CODE
ID	Ramsar_Site_No	SitRecID	site_id	SITECODE
Site	Site_name	IntName	country_c_254	SITENAME
Scientific_name	n.a.	Converted to name used in AEWA Annex 2		
English_name	n.a.	Converted to name used in AEWA Annex 2		
Population	n.a.	n.a.	wpepopid	n.a.
Minimum	n.a.	SpcPopMin	popmin	LOWERBOUND
Maximum	n.a.	SpcPopMax	popmax	UPPERBOUND
Units	n.a.	UniDesc	units	COUNTING_UNIT
Season	n.a.	SeaDesc	season	POPULATION_TYPE
Year_start	n.a.	SpcPopYear	yearstart	n.a.
Year_end	n.a.	SpcPopYearEnd	yearend	DATE_UPDATE
IBA_criteria	n.a.	SitCriPopConfirmed	ibacriteri_c_254	n.a.
CSN1_criteria	n.a.	n.a.	csn1	n.a.
CSN2_criteria	n.a.	n.a.	csn2	n.a.

Table 2. AEWA species listed on the Threatened categories of the global IUCN Red List after year 2000 and, therefore, the IBA Criterion A1 and CSN1 Criterion might be not yet applied comprehensively to identify internationally important sites for these species. The threshold for Vulnerable (VU) species is 10 pairs or 30 individuals, for Endangered (EN) and Critically Endangered (CR) species regular occurrence of the species in any numbers would qualify.

English name	Scientific name	IUCN Red List category	Year first listed as Globally Threatened
Maccoa Duck	<i>Oxyura maccoa</i>	VU	2017
Long-tailed Duck	<i>Clangula hyemalis</i>	VU	2011
Velvet Scoter	<i>Melanitta fusca</i>	VU	2012
Common Pochard	<i>Aythya ferina</i>	VU	2015
Horned Grebe	<i>Podiceps auritus</i>	VU	2015
Grey Crowned-crane	<i>Balearica regulorum</i>	EN	2009
Black Crowned-crane	<i>Balearica pavonina</i>	VU	2010
Shoebill	<i>Balaeniceps rex</i>	VU	2004
Cape Cormorant	<i>Phalacrocorax capensis</i>	EN	2013
Great Knot	<i>Calidris tenuirostris</i>	EN	2010
Black-legged Kittiwake	<i>Rissa tridactyla</i>	VU	2017
Damara Tern	<i>Sternula balaenarum</i>	VU	2016
Atlantic Puffin	<i>Fratercula arctica</i>	VU	2015